



WootenNews

Serving the Wooten Community

Join the Association!

Wooten Neighborhood Association is open to all that live or work within Wooten Neighborhood.

To join our association, scroll to the end of the newsletter.

Spring 2026!

Welcome to Spring! Lately, the weather has felt like a mix of winter, spring, and summer. This year, though, Spring 2026 is shaping up to be warmer than usual in Central Texas, with average highs rising from the low 70s in March to almost 80 degrees in April.

Even with the warmer weather, we're still seeing small bluebonnets popping up around the neighborhood. Some neighbors have even marked them with signs!



We're sharing updates on neighborhood activities, including ways to support our parks and help protect local birds. About 6.3 million birds crossed Texas in a single night, with around 448,500 passing through Travis County. Warblers like Nashville, Yellow, Wilson's, and Black-throated Green are among the most common species to look for.

Find out how you can help protect these birds in the coming months. We'll also recap our recent **It's My Park Day** and share what the Wooten Neighborhood Planning Contract Team (WNPCT) has been up to.

See you in the summer!

In this newsletter you can expect:

Neighborhood Developments

Nature Watch

Park Updates

Association Dates and Activities

Community-Centered Developments: What's going on in Wooten

WNPCT: Advocacy and Community Engagement

Toyota Dealer

The Wooten Neighborhood Plan Contact Team (WPNCT) has been actively engaged in responding to Toyota/Group 1 Automotive's rezoning request. Our team submitted an official response outlining key concerns around semitruck and delivery traffic, nuisance and light control measures, and parking. We are pleased to report that Toyota has agreed to several important commitments — though some items remain under discussion.

What Toyota Has Agreed To

After ongoing negotiations, Toyota has committed to the following:

- **Vehicle Delivery:** Toyota will sign a restrictive covenant to only deliver and unload vehicles on their lot, keeping large truck traffic off neighborhood streets.
- **Dumpster Relocation:** The dumpster will be moved to a more central location within the site, approximately 192 feet from the nearest property line.
- **Landscaping:** The landscape plan will incorporate native trees — including Ehretia Anacua, Yaupon Holly, and Carolina Buckthorn — along the perimeter of the site adjacent to the neighborhood.
- **Vehicle Tracking:** The dealership will use a vehicle tracking device to locate vehicles on the lot instead of car alarms, reducing noise disturbances.
- **Employee Parking:** A restrictive covenant will be signed ensuring employees do not park on public streets. Toyota will also enter an escrow agreement to fund parking restrictions if needed.
- **EV Charging Stations:** EV charging stations and spaces will be clearly marked and available to the public.
- **Sidewalks & Construction:** Additional items, including sidewalk improvements and construction process standards, have also been agreed upon.

Ongoing Concerns

Despite these agreements, some issues remain. Residents have reported on the neighborhood's private Facebook page that Toyota/Group 1 employees are still using residential streets as a cut-through route between the dealership and their overflow storage lot at the old NTB on Anderson Square.

Wooten Neighborhood Plan Contact Team (WNPCT) provides input on city planning priorities and recommends amendments to city staff, specifically in rezoning cases. The team seeks representation from property owners, residential renters, business owners, and any neighborhood members who rent or own property in Wooten. The contact team advocates for our neighborhood, ensuring our interests are represented, especially if neighborhood-based intervention is necessary.

There are no membership dues. The team meets on the first Monday of each month, typically at a local eating establishment.

The team has four positions: chairman, vice chairman, secretary, and attendance keeper. The website provides more information, including contact information and team activities.

Multiple incidents of speeding — including near a local elementary school — have been reported, and residents are urging local officials to require employees to use Highway 183 instead.

Items Still Under Discussion

The WPNCT and Toyota are continuing to negotiate on two key items. First, the screening of the parking garage remains unresolved — Toyota provided renderings featuring synthetic greenery as architectural screening, which raised concerns about long-term maintenance. Second, questions about the photometric plans and lighting remain open.

Next Steps

The team will continue working toward a final agreement. Toyota/Group 1 Automotive is also still addressing outstanding comments from the City of Austin. We will keep the neighborhood informed as discussions progress. More details and renderings can be found on the [website](#).

Nature Watch

By Joanne Garrett



Every year, billions of birds take to the night sky on their annual migration — navigating by starlight, moonlight, and Earth’s magnetic field across thousands of miles. They often use the moon, stars, and sun to navigate. Light pollution can interfere with these signals and cause a serious problem for birds: they might be thrown off course or become so disoriented that they circle until they fall from exhaustion or collide with buildings, but you can help them with just a flick of a switch!

How can I help?

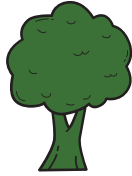
- Turn off lights at night on unoccupied floors and in unused spaces.
- Close curtains and blinds.
- Use shielded lighting that directs lights downward.
- Turn off exterior floodlights during bird migration season, which starts in March! From March 1 to June 30th, turn off all non-essential lights from 11 pm – 6 am every night.

Want to learn more?

The Travis Audubon Society has been dedicated to conservation through birding since 1952. You can learn more about their activities, including lights out, on their website: <https://travisaudubon.org/>

Platinum Sponsors





Park Update

On March 7, we participated in **It's My Park Day**.

While the weather cut the day short, we want to thank everyone who came out for! Organized by the Austin Parks Foundation, this community day of service brings neighbors together twice a year to care for our shared green spaces through projects like mulching, invasive species removal, and general park improvements.

At our park, volunteers mulched the trees, pulled weeds in the garden bed, and placed cardboard under the river rock to help prevent future weed growth. Thanks to everyone who donated their time and energy to make the park look great and keep it healthy for the whole neighborhood to enjoy.

Be sure to check out the photos from the day and keep an eye out for the next opportunity to pitch in this fall!



[Wooten - It's My Park Day Event](#)



THANK YOU TO
THESE
BUSINESSES FOR
SUPPORTING US!

INTERESTED IN
ADVERTISING IN
OUR
NEWSLETTER?

REACH OUT TO
[WOOTEN@
WOOTENNA.COM](mailto:WOOTEN@WOOTENNA.COM)



CHRISTINA THE CAR FINDER

For Busy Professionals
And Those
Who Hate Car Buying

Save Time and Hassle

512-331-1872

Flat Rate \$1,500



FIND US ONLINE!

 WOOTENNA.COM

 [WOOTENATX](https://www.facebook.com/WOOTENATX)

 WOOTEN--AUSTIN--TX



Upcoming Neighborhood Meetings

All neighbors and businesses are welcome to participate!

Quarterly Wootenannie

- April 13, 2026
- Time: 7:00 - 9:00 pm
- Location: Nosh and Bevy , 8440 Burnet Rd #100, Austin, TX 78757

Wooten Planning Neighborhood Contact Team Meeting

- May 4, 2026
- Time: 7:30 - 8:30 pm
- Location: Nosh and Bevy , 8440 Burnet Rd #100, Austin, TX 78757

Wooten Neighborhood Meeting

- May 11, 2026
- Time: 7:00 - 8:30 pm
- Location: Redeemer Lutheran School 500 W Anderson Ln., Austin, TX 78757 or Stream It: [Link](#)

Thank you for reading!

BECOME A MEMBER

Be a part of our inspiring mission to inform, connect, and beautify our community. Memberships are just **\$5** per person per year.

Submit the form to the right or Pay online via Zeffy: [WNA Membership Sign Up](#)

BECOME A SPONSOR

Sponsors support the community and help sustain the association and create events that connect our neighborhood.

Participants will receive complimentary advertising in our quarterly newsletter, on our sponsorship page, and on our social media channels. Learn more on our website: [Sponsorship Program](#).

Submit the form to the right or Pay online via Zeffy: [WNA Sponsorship](#)

SUPPORT OUR PARKS

Supporting our Park through donations is a wonderful way to contribute to the well-being of our community and the environment.

Submit the form to the right or Pay online via Zeffy: [Park Fund](#)

MAKE CHECKS PAYABLE TO WNA AND MAIL TO:

P.O. Box 10171
Austin, TX 78766



WOOTEN NEIGHBORHOOD ASSOCIATION MEMBERSHIP FORM

- Annual Membership – \$5**
- Extra Donation – \$_____**
- Park Fund - \$_____**
- WNA Sponsorship:**
 - Bronze – \$250** **Silver – \$450**
 - Gold – \$600** **Platinum – \$1000**

Name: _____

Email: _____

Address: _____

Company Name: _____