

Wooten Neighborhood Watch Kickoff Meeting

February 20, 2012

Agenda

- Welcome & Introductions
- Purpose & goals
- Define the problem to solve
- Identify the solution
- How to get involved
- Guest speakers
- Security tips
- Neighborhood watch signage update
- Resources
- Next steps & future plans
- Q&A



Welcome & Introductions

- President's Remarks
- Introduce Neighborhood Watch Working Group
- Welcome guest speakers

Purpose & goals

Benefits

- Reduce crime
- Increase property value
- Empower ourselves
- Weave fabric of neighborhood
- Foster neighborhood identity
- Spin off other events and opportunities



Goals

- Not to stop crime in progress
- Be the eyes and ears of the police - who are literally waiting for your call
- Know what does not fit or belong
- Reporting of suspicious activities or people is how crimes are prevented and solved
- **Not to see criminals, but for criminals to see you**

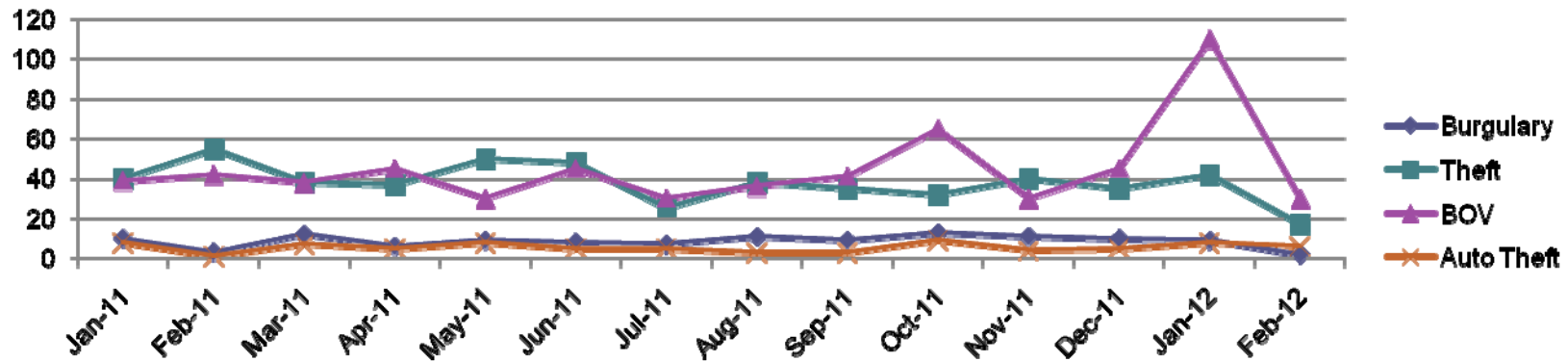
Define the problem to solve

- Identify crimes we are trying to prevent
 - Property crimes
 - Burglary (break in, breaking & entering)
 - Theft (no forcible entry)
 - Burglary of Vehicle (“BOV”, property taken)
 - Auto theft
 - Criminal mischief (property destruction)
 - Graffiti
- Identify crimes we are **not** trying to prevent
 - Violent crimes
 - Murder, rape, robbery, aggravated assault
 - Domestic disputes, family disturbance & behavior

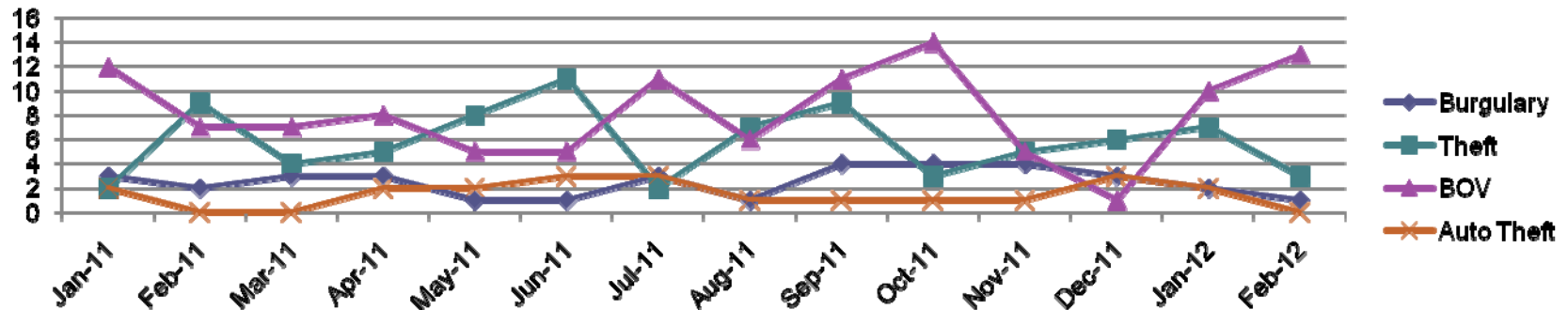


Define the problem to solve

78757 Crime Statistics



Wooten Neighborhood Crime Statistics



Top 4 Crimes By Month in 78757

	Jan-11	Feb-11	Mar-11	Apr-11	May-11	Jun-11	Jul-11	Aug-11	Sep-11	Oct-11	Nov-11	Dec-11	Jan-12	Feb-12
#1	BOV	BOV	BOV	BOV	BOV	BOV	Theft	BOV	BOV	BOV	BOV	BOV	BOV	BOV
#2	Theft	Theft	Theft	Theft	Theft	Theft	BOV	Theft	Criminal Mischief	Theft	Theft	Theft	Theft	Theft
#3	Criminal Mischief	Graffiti	Graffiti	Family Disturbance	Family Disturbance	Family Disturbance	Family Disturbance	Leaving the Scene	Theft	Burglary	Family Disturbance	Criminal Mischief	Leaving the Scene	Criminal Mischief
#4	Graffiti	Family Disturbance	Criminal Mischief	Leaving the Scene	Criminal Mischief	Criminal Mischief	DWI	Family Disturbance	Leaving the Scene	Family Disturbance	Burglary	Family Disturbance	Criminal Mischief	Family Disturbance

Most likely places for crime:

- Parking lots of restaurants or stores in Arboretum, Research & Burnet, Anderson Square
- Apartments near Anderson, Anderson & Lamar
- Neighborhoods along Burnet & Highway 183
- Parking lots of gyms

How will measure success



Crime statistics for Wooten Neighborhood (Dec 2011- Feb 2012)
Red: Burglary of Vehicle
Yellow: Auto Theft
Blue: Burglary of Residence
Green: Theft

Who is the Austin criminal?

- 78% adults, 22% juveniles
 - Most burglars have committed 20 crimes at the time of being caught
 - In Austin, currently only 7% of burglaries result in an arrest (104 of 1438 crimes, 2011)
- **We must play our part**



Identify the solution

- What is a neighborhood watch?
 - Everyone
 - All the time
 - Calling
- What is not a neighborhood watch?
 - Thinking someone else will do something
 - Hiring a guard
 - Texting*, not calling, not acting

* Text after you have called the police



What you must commit to do

- **Be a block watch captain**
 - Know your neighbors
 - Do the 5
- **One hour per week**
 - Drive
 - Walk/Jog
 - Sit and watch your block
 - **Monday thru Friday (830am -330pm)**
- Sign up for training
- Stay involved
- Support watch patrols (smile and wave)



Patrol tools we will use

- Phone (not provided)
- Pen and paper
- Contact info
- Map of neighborhood
- Magnetic signs for car patrol



Note: Guns are not on this list.

How to get involved

- **Commit to one hour per week**
- **Sign up for training**
 - Promise to not act foolishly
 - Best practices for patrols
 - Practice identifying suspects and vehicles
 - How to communicate effectively with police
- **Pick a time slot for patrol or watch**
- **Sign up for the APD's Alert Network (see handout)**



Try an exercise

Guest speakers

- **John Luther**
 - Barton Hills Neighborhood Watch
- **Mary Rudig**
 - Gracywoods Neighborhood Watch
 - North Austin Coalition
- **Laura DiCarlo**
 - Allendale Neighborhood Watch

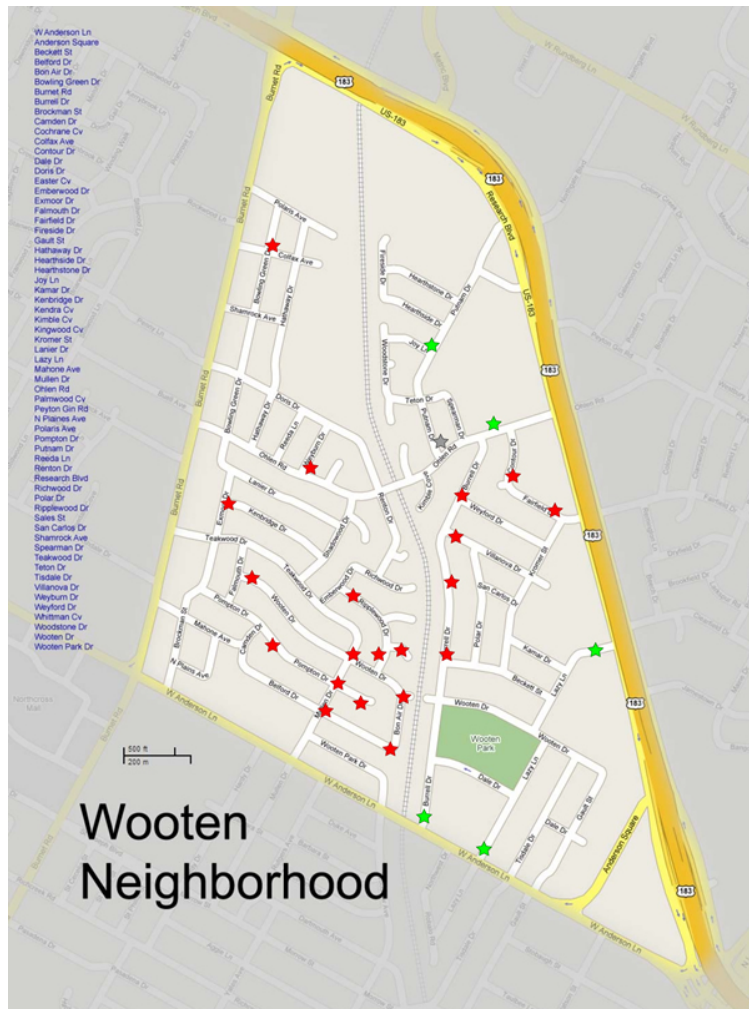


Security tips

- Improve door locks
- Install window locks
- “Beware of Dog” signs (even if you don’t own one)
- Lights near windows on automated timers
- Lights near entryways
- Car security tips (deny “window shopping”)
- Bike security tips (out of sight)



Neighborhood watch signage update



New, replace, remove

Neighborhood watch signage update



Neighborhood watch signage update

The process:

1. Obtain updated map with sign posts (replace, new, remove) (Patty)
2. Working group come to agreement on final sign placement and count (Burton start email thread)
3. Create final budget request (Chris)
3. Present final sign placement and count and budget to neighborhood group for approval (Patty & Chris)
4. Obtain signatures on install request from property owners (all) (ideally at next neighborhood meeting)
5. Once approved and paperwork done, order signs from company (Chris)
6. Accept delivery of signs (Chris)
7. Submit completed install request form (Marilyn)
8. Signs installed (up to 6 weeks after install form submitted)

➤ **Expect signs to be replaced and set up by April 2012**

Resources

- APD Resource Manual 2012
- How to Describe a Suspect
- APD Alert Network Overview
- APD Region 2 Representatives Links



- More can be found at the Wooten Neighborhood web site
<http://www.wootenna.com/>

Next steps & future plans

Next 6 months:

- **February**
 - Compile volunteer list
 - Start practicing watch skills
 - Organize and schedule watch training
 - Obtain signage
- **March**
 - Conduct watch training, ride-along's
 - Start patrols
- **April**
 - Social with APD
 - Installation of signs
- **May**
 - Commander's Forum
- **June**
 - Safety fair with APD & Austin Fire Department
- **July**
 - Social/movie night with watch volunteers

Other planned activities:

- On-going reports and measures of success in the neighborhood newsletter & meetings
- National Night Out (in Texas): October 02
- Another round of neighborhood watch training in the fall
- Explore apartment watch program



What are your questions?

A decorative horizontal bar with a teal and white patterned background, featuring a stepped, staircase-like effect on the right side.